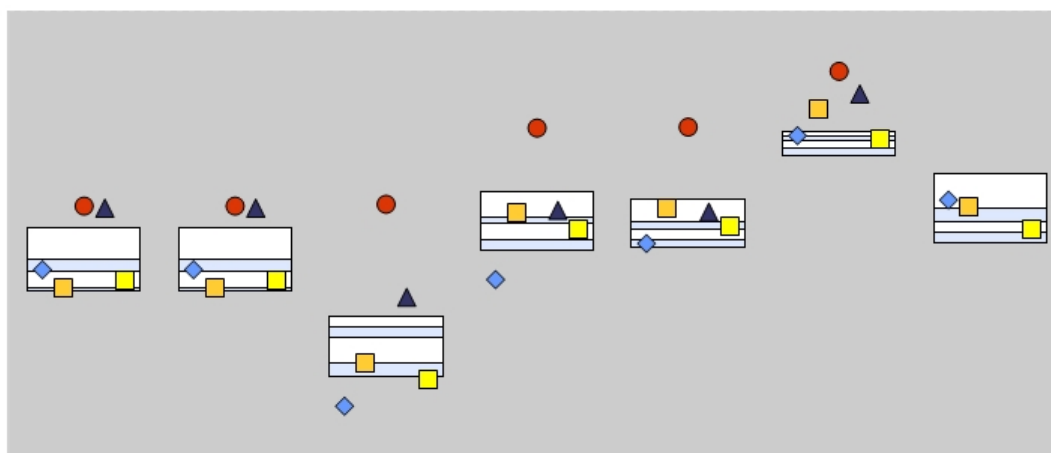


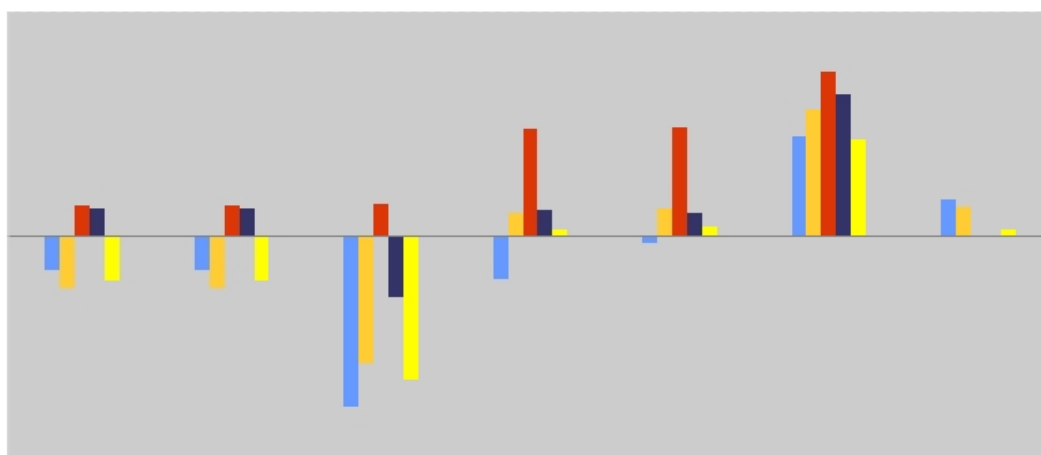
Peer Group Statistics and Ranking vs. MF-ILCV-Intl Large-Cap Value Universe

Quartile Ranking Analysis Annualized Returns



- ◆ Allianz Global Investors: AllianzGI NFJ International Value
- ▲ Schroder Invest Mgmt North America Inc: Schroder:Intl MitC V;Inv
- Causeway Capital Management LLC: Causeway:Intl Val;Inst
- Benchmark: MSCI EAFE Value-ND
- MFS Investment Management: MFS Intl Value;R5

Annualized Returns



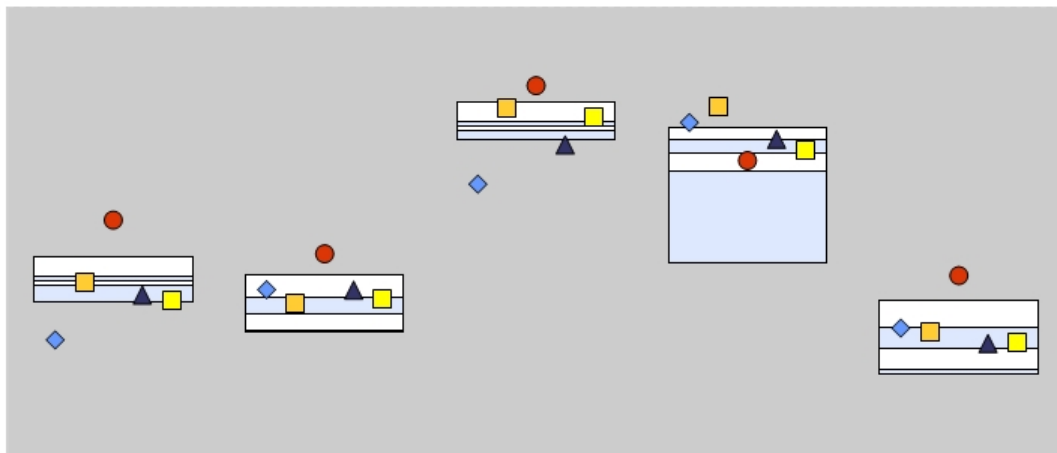
- Allianz Global Investors: AllianzGI NFJ International Value
- Schroder Invest Mgmt North America Inc: Schroder:Intl MitC V;Inv
- Causeway Capital Management LLC: Causeway:Intl Val;Inst
- Benchmark: MSCI EAFE Value-ND
- MFS Investment Management: MFS Intl Value;R5

Firm/Product	VT	RM	MRQ		YTD		1 Yr		3 Yrs		5 Yrs		7 Yrs		10 Yrs	
			Return	Rank	Return	Rank	Return	Rank	Return	Rank	Return	Rank	Return	Rank	Return	Rank
Allianz Global Investors: AllianzGI NFJ International Value	SA	GF	-3.01	47	-3.01	47	-15.16	100	-3.88	100	-0.68	83	8.93	21	3.20	19
Causeway Capital Management LLC: Causeway:Intl Val;Inst	PF	NF	-4.70	86	-4.70	86	-11.36	75	2.05	23	2.52	10	11.27	1	2.64	20
MFS Investment Management: MFS Intl Value;R5	PF	NF	2.66	1	2.66	1	2.83	1	9.61	1	9.70	1	14.66	1	---	---
Schroder Invest Mgmt North America Inc: Schroder:Intl MitC V;Inv	PF	NF	2.48	1	2.48	1	-5.46	1	2.28	22	2.12	11	12.65	1	---	---
<b>Benchmark: MSCI EAFE Value-ND</b>	<b>IX</b>	<b>IX</b>	<b>-3.97</b>	<b>52</b>	<b>-3.97</b>	<b>52</b>	<b>-12.82</b>	<b>96</b>	<b>0.59</b>	<b>59</b>	<b>0.82</b>	<b>38</b>	<b>8.64</b>	<b>35</b>	<b>0.60</b>	<b>64</b>



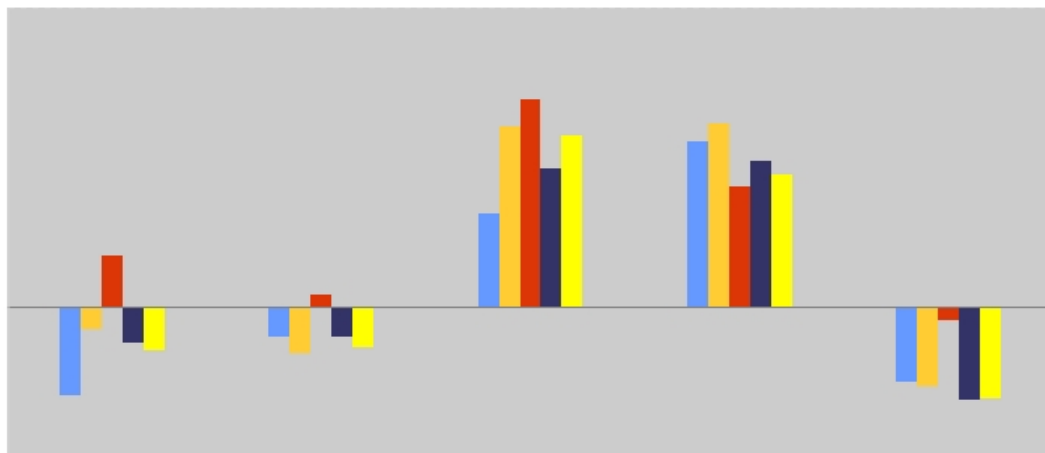
Peer Group Statistics and Ranking vs. MF-ILCV-Intl Large-Cap Value Universe

Quartile Ranking Analysis Calendar Year Returns



- ◆ Allianz Global Investors: AllianzGI NFJ International Value
- ▲ Schroder Invest Mgmt North America Inc: Schroder:Intl MitC V;Inv
- Causeway Capital Management LLC: Causeway:Intl Val;Inst
- Benchmark: MSCI EAFE Value-ND
- MFS Investment Management: MFS Intl Value;R5

Calendar Year Returns



- Allianz Global Investors: AllianzGI NFJ International Value
- Schroder Invest Mgmt North America Inc: Schroder:Intl MitC V;Inv
- Causeway Capital Management LLC: Causeway:Intl Val;Inst
- Benchmark: MSCI EAFE Value-ND
- MFS Investment Management: MFS Intl Value;R5

Firm/Product	VT	RM	CY 2015		CY 2014		CY 2013		CY 2012		CY 2011	
			Return	Rank	Return	Rank	Return	Rank	Return	Rank	Return	Rank
Allianz Global Investors: AllianzGI NFJ International Value	SA	GF	-11.82	99	-3.99	22	12.46	99	22.05	1	-9.97	26
Causeway Capital Management LLC: Causeway:Intl Val;Inst	PF	NF	-2.97	64	-6.20	28	24.19	8	24.53	1	-10.60	30
MFS Investment Management: MFS Intl Value;R5	PF	NF	6.86	1	1.60	1	27.80	1	16.13	66	-1.79	1
Schroder Invest Mgmt North America Inc: Schroder:Intl MitC V;Inv	PF	NF	-4.82	89	-4.06	22	18.57	95	19.45	24	-12.39	40
<b>Benchmark: MSCI EAFE Value-ND</b>	<b>IX</b>	<b>IX</b>	<b>-5.68</b>	<b>91</b>	<b>-5.39</b>	<b>26</b>	<b>22.95</b>	<b>9</b>	<b>17.69</b>	<b>43</b>	<b>-12.17</b>	<b>38</b>



**Generated By:**



---

**Important Disclosures**

*eVestment collects information directly from investment management firms and other sources believed to be reliable. Mutual fund information provided here through a partnership between eVestment and Lipper Inc., whereby information is collected directly from the individual mutual families by Lipper. eVestment does not guarantee or warrant the accuracy, timeliness, or completeness of the information either collected, sourced or otherwise provided to eVestment or its partners and is not responsible for any errors or omissions. Performance results may be provided with additional disclosures available on eVestment systems and other important considerations such as fees may be applicable. In summary sections, all categories are not necessarily included and totals may not equal 100%. [Any calculated fees contained herein are calculated using the published fee schedule supplied to the eASE Database. eVestment does not warrant the accuracy of the fee schedule information and all calculations are intended strictly for comparative and analysis purposes. Actual fees may differ significantly from those calculated and all fees should be verified with the appropriate investment management organization. In instances where no "Balance at" rate is provided, the last fee rate given is applied, which may particularly impact the fees calculated on larger account sizes. The calculated fees do not consider account availability, minimum account sizes, minimum annual fees, negotiated rates, performance-based fees or other account specific considerations. More details on the fee rates applied and other fee related information can be found in the eVestment Manager Profile for each selected product.] Distribution of this content is covered under Customer's Service Agreement and is intended for full and complete internal use and for Customer's use in one on one discussions and projects with clients and prospects. Not intended for general or unsolicited distribution or for distribution outside of the terms of Customer's Agreement with eVestment.*

Copyright 2004 - 2016 eVestment Alliance, LLC. All Rights Reserved.